

From the Spring to the Architecture

Crystal Bridges Museum of American Art
Campus Parking - Bentonville, Arkansas - USA

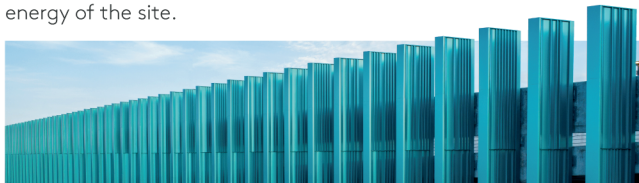
Project:	Crystal Bridges Museum of American Art Campus Parking
Project Location:	Bentonville, Arkansas - USA
Use:	Cultural/Institutional
Architect:	Marlon Blackwell Architects
Product:	P-1, P-2, P-4, MX-6
Product:	Over 70,000 sq ft



A journey through art

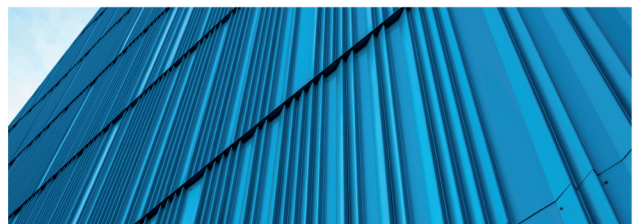
Founded by philanthropist *Alice Walton*, the *Crystal Bridges Museum of American Art* was created with the mission of welcoming everyone and celebrating the American spirit by uniting art and nature. Its name comes from a nearby natural spring and the bridge-like structures designed by *Moshe Safdie*, which connect pavilions arranged around spring-fed lakes. The campus brings together galleries, classrooms, a restaurant, a store designed by *Marlon Blackwell*, a library with more than 50,000 volumes, and trails that link its 134 acres to downtown *Bentonville*.

Within this context, adjacent to the museum's immersive trails, the new Crystal Bridges parking structure transcends its functional role and becomes a cultural gateway—an architectural work of art in its own right. The six-story building redefines the parking typology by integrating it into the artistic, natural, and social ecosystem of the campus. Inspired by the Ozarks landscape and by the museum's mission to expand access to art, the project adopts a vibrant metal façade that reflects movement, color, and rhythm. By transforming a utilitarian element into an experience, **Morin's aluminum panels** play a central role in shaping an iconic identity that resonates with the surroundings and with the cultural energy of the site.



Form that elevates function

More than a simple enclosure, **Morin panels from the Matrix and Pulse series** helped reimagine the building at an urban scale. The **P-1, P-2, P-4, and MX-6 profiles** create varied depths, continuous surfaces, and a sequence of metal fins that filter light and highlight the geometry of the volume. Strategic perforations provide natural ventilation, replacing visible louvers and preserving formal purity. The system's flexibility makes it possible to integrate elements, conceal transitions, and reinforce architectural fluidity, resulting in a precise and vibrant façade.



Aluminum Sculpture

More than 70,000 square feet of Morin panels form a dynamic and imposing façade that responds to light and to its surroundings. Distinct profiles, miterseam corners, and precise modulations ensure seamless continuity between solid and perforated surfaces, delivering performance, durability, and rigorous alignment. With concealed fastening and a sculptural expression, the system transforms the parking structure into a modern, efficient, and memorable architectural piece.

HQ / East 685 Middle Street, Bristol, CT 06010 | 1-800-640-9501
West 10707 Commerce Way, Fontana, CA 92337 | 1-800-700-6140
South 1975 Eidson Drive, DeLand, FL 32724 | 1-800-640-9501
Central 15000 Panatela Parkway, Little Rock, AR 72206 | 1-800-640-9501
www.morincorp.com #morincorp



Morin[®]
By Kingspan