

# Sister Lillian Murphy: Housing Reimagined

Sister Lillian Murphy Community  
Mission Bay, San Francisco - USA

Project:	Sister Lillian Murphy Community
Project Location:	Mission Bay, San Francisco - USA
Use:	Residential - Multifamily
Architect:	Paulett Taggart Architects + Associate Architect: StudioVARA
Product:	MX-1
Product:	Over 9,000 sq ft



## A Landmark of Community and Design

Shaped by community concerns about large industrial and mixed-use buildings in *Mission Bay*, the **Sister Lillian Murphy Community** breaks the city block into four articulated wings, creating a human-scale building that respects the local context. With 152 affordable housing units for families earning up to 80% of the area's median income, the project balances functionality, aesthetics, and social inclusion.

The development is an award-winning landmark in affordable housing, internationally recognized for its architectural excellence, including: *2022 AIA CA Residential Architect Design Award, 2024 Architizer A+ Awards Special Mention, 2024 Architecture MasterPrize Honorable Mention, and 2025 ULI Americas Awards for Excellence Winner.* The façade integrates with the neighborhood, reflecting Mission Bay's industrial history and its new urban vision, creating a project that is iconic both socially and visually.



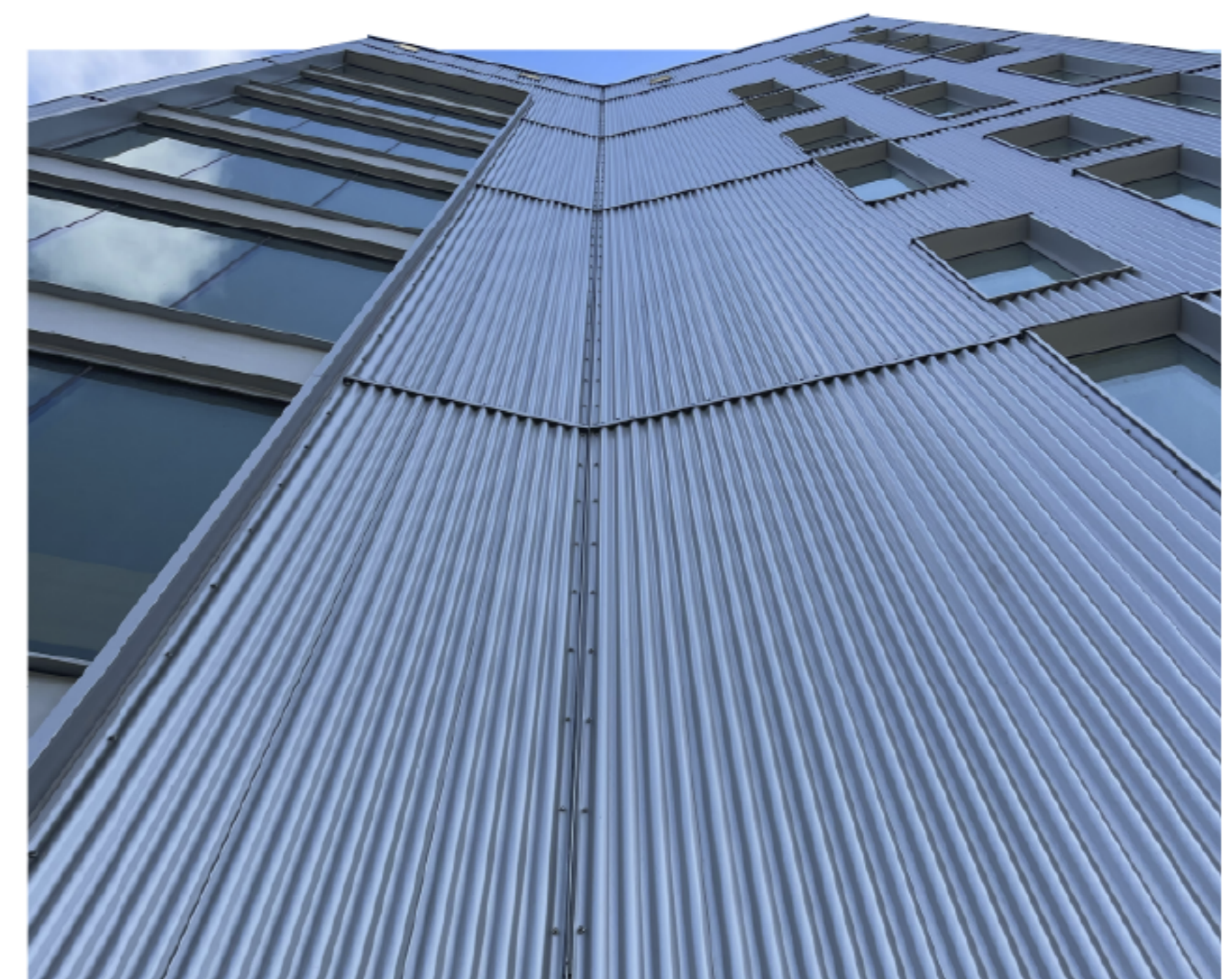
## Corners: Detail with Identity

**Morin MX-1 aluminum panels**, developed with advanced technology and high performance, provide precise transitions, system integration, and a seamless architectural expression.

One of the key distinctions of this project is the use of corners. Here, they move beyond a technical detail to play a central role in the façade concept. The continuous metal corners create a strong sense of volume with no visual interruptions, reinforcing the modernity and purity of the architectural lines. These *corners* also allow for exceptionally clean detailing in areas that are typically more critical, elevating the quality of execution and strengthening the innovative character of the design. They connect surfaces, align junctions, and enhance the overall rhythm of the panels.

## Precision, Performance, and Impact

Over 9,000 sq ft of **Morin MX-1 panels** clad the façade, ensuring durability and high visual performance. The special **"coastal finish"** protects the panels against corrosion and wear typical of coastal climates, preserving the sophisticated appearance and sheen of the façade over the years. Precise transitions between solid and perforated areas create a dynamic surface that interacts with natural light, while integration with common areas and cross-ventilation enhances sustainability. The result is an award-winning, functional, durable, and visually striking building, establishing the **Sister Lillian Murphy Community** as a benchmark in affordable housing and high-level design.



**HQ / East** 685 Middle Street, Bristol, CT 06010 | 1-800-640-9501  
**West** 10707 Commerce Way, Fontana, CA 92337 | 1-800-700-6140  
**South** 1975 Eidson Drive, DeLand, FL 32724 | 1-800-640-9501  
**Central** 15000 Panatela Parkway, Little Rock, AR 72206 | 1-800-640-9501  
[www.morincorp.com](http://www.morincorp.com) #morincorp



**Morin**<sup>®</sup>  
By Kingspan