

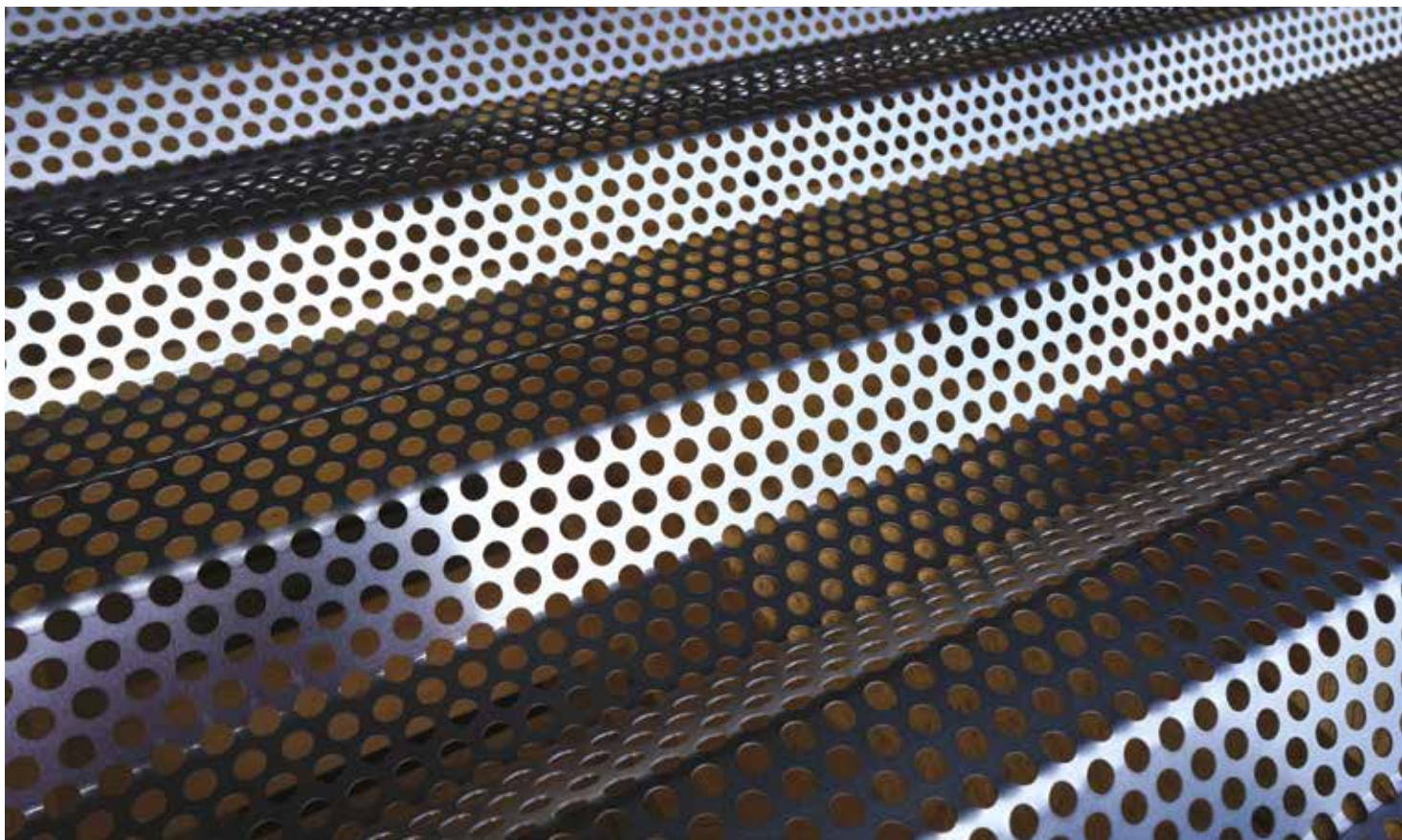
Metal Wall & Roof Systems
North America

Protected by



Perforated Panels Architectural Metal Wall and Roof Systems

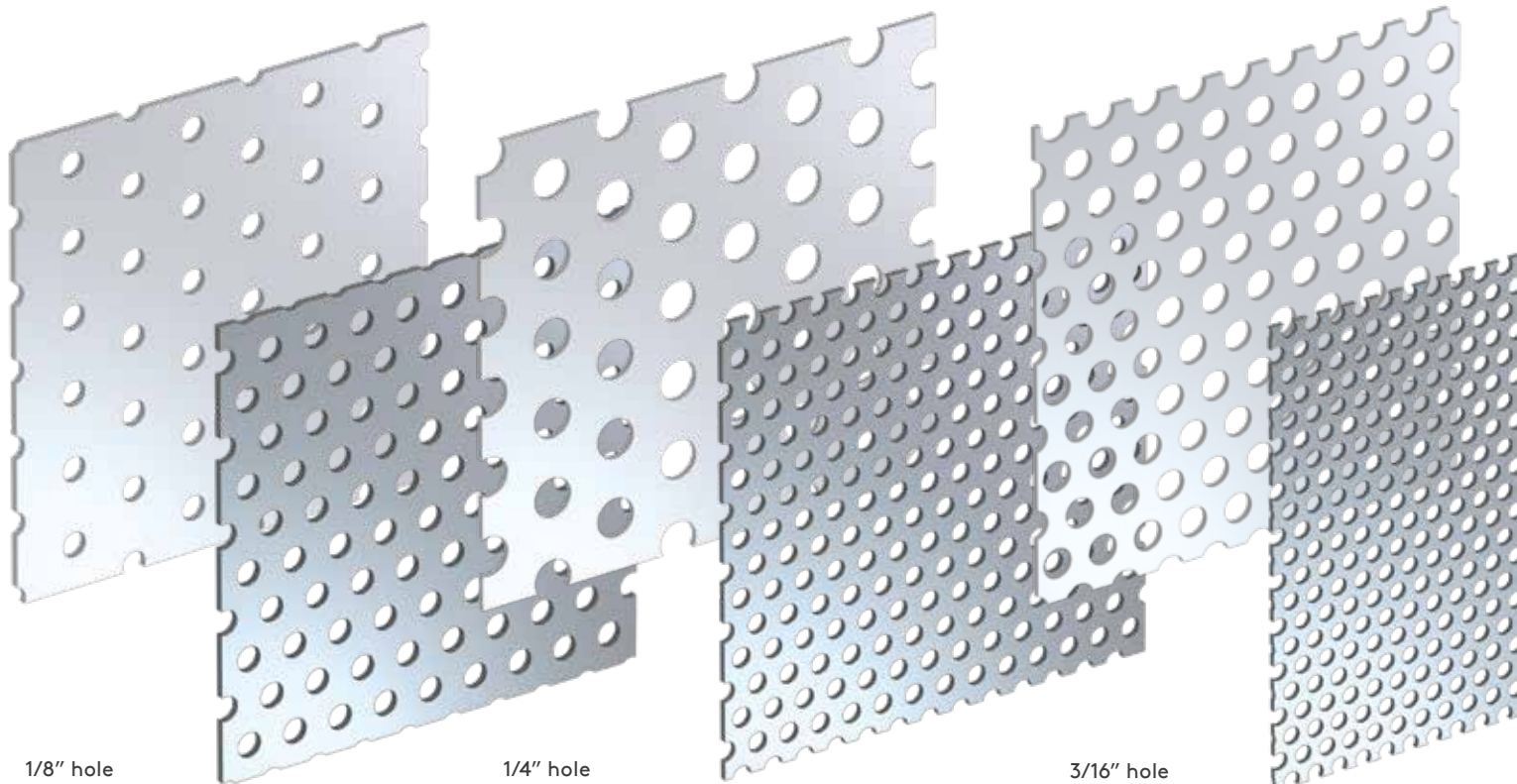
Single Element Building Envelope Solutions



Morin®
By Kingspan

Perforated Panels

At Morin, we specialize in perforated panels that have a variety of functional and creative applications.



1/8" hole
3/8" spacing
10% open area

1/8" hole
1/4" spacing
23% open area

1/4" hole
1/2" spacing
23% open area

1/8" hole
7/32" spacing
30% open area

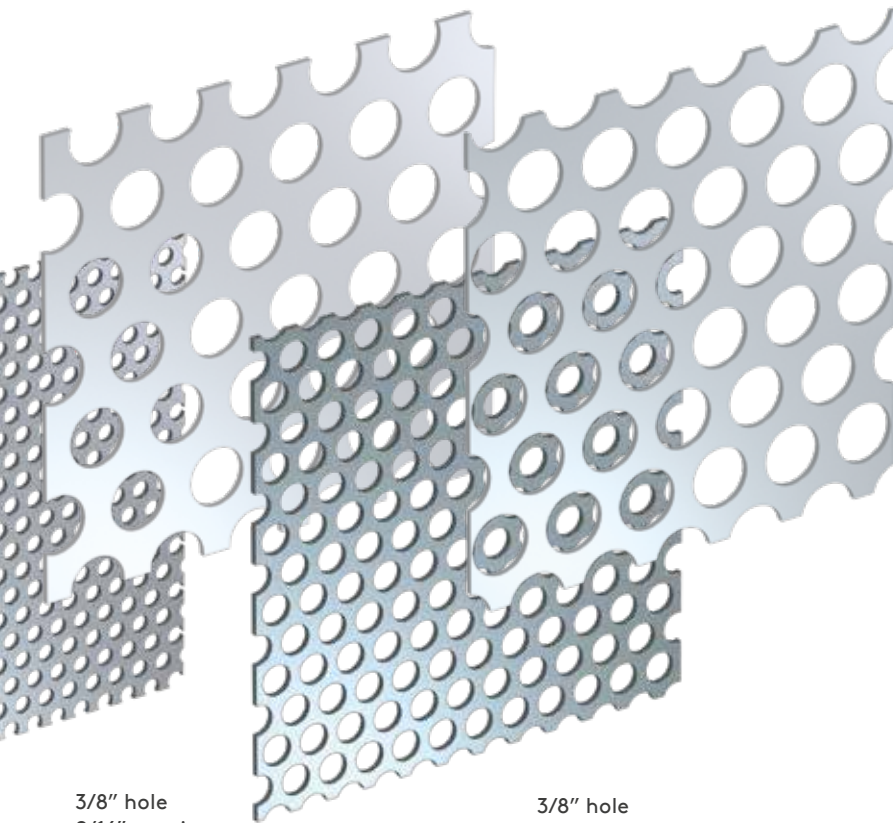
3/16" hole
5/16" spacing
33% open area

1/8" hole
3/16" spacing
40% open area



We constantly find new uses for perforations and are prepared to offer unique solutions for every design.

The many architectural applications of Morin perforated panels include passive solar shading, control of light and sound, screening in parking garages and stair towers, or to simply obscure mechanical equipment.



3/8" hole
9/16" spacing
40% open area

3/16" hole
1/4" spacing
51% open area

3/8" hole
1/2" spacing
51% open area

Suggested Applications

- Sunshade / light filtering
- Noise reduction
- Screening
- Airflow and ventilation
- Wind reduction
- Fencing and barriers

Suggested Materials and Gauges

- Aluminum – .032" / .040" / .050"
- Stainless steel – 24 / 22 / 20 gauge
- Zinc – 0.8 mm / 1.0 mm
(minimum hole size for zinc 3/16")

Check with your local Morin representative for all of our perforating capabilities.

All Morin profiles are available with perforations

Notes: All perforation patterns are shown with direction of coil / panel length from left to right.

Patterns shown are representative of scale. Physical samples are available upon request.

Color coating on both sides is available at an extra cost, otherwise backside will have a standard washcoat.

Material is painted prior to perforating.

Perforated galvalume is subject to rust in exterior conditions, available for interior applications only.

Custom perforation patterns are available. Contact Morin with your design ideas.

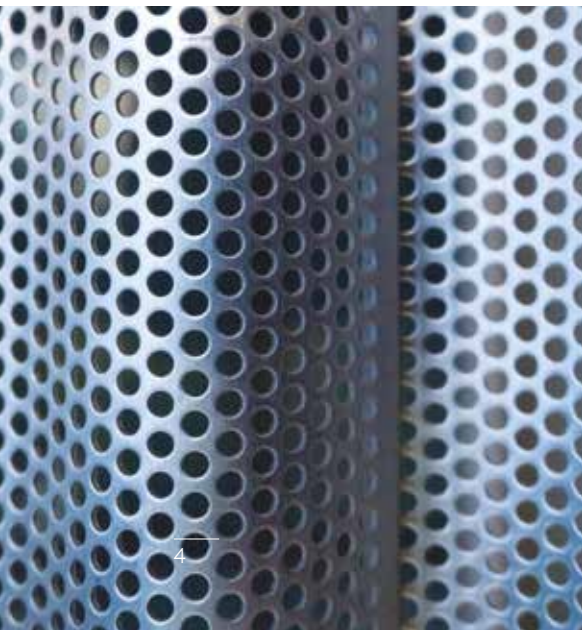
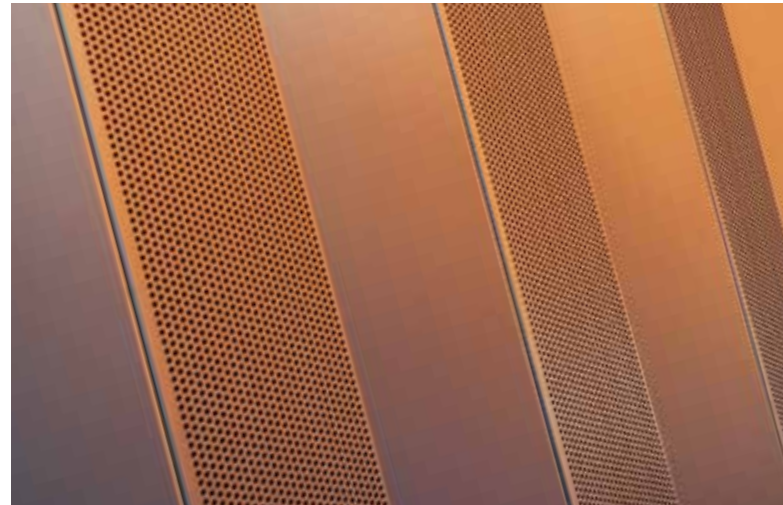
Please go to Morincorp.com for updates and latest product information including exact patterns and coil directions.

Perforated Panels
Architectural Metal Wall and Roof Systems



Architectural Impact

Create a statement with Morin Perforated Panels.





Case Study Water's Edge 3 Offices

49,000 ft² of perforated corrugated panels wrap around this six story certified LEED® Gold office building in Southern California.

The screenwall, which is the building's most striking feature, is composed of both perforated and solid aluminum Morin Matrix® panels. SPF Architects state its design is, "inspired by the play of light on water" and "designed to dematerialize, visually lightening the structure's mass while functionally providing relief from the full brunt of the sun".



Location	Playa Vista, CA
Architects	SPF Architects
Profile	Matrix MX-1
Material	.050 aluminum
Perforation pattern	3/16" holes 5/16" staggered spacing 33% open area
Colors	Bright Silver on both sides

Case Study

Georgia Tech Engineered Biosystems Building



At a distance, the screen wall on this research building may seem purely for design aesthetic. Up close, it is apparent that each 4" deep zinc panel cladding the building is strategically designed.

The edges of the panel parallel to the building and windows have a greater percent perforated open area than the edges parallel to the sky. This provides dual functionality as a highly effective sunshade and a privacy screen, while allowing natural light to filter into the building.

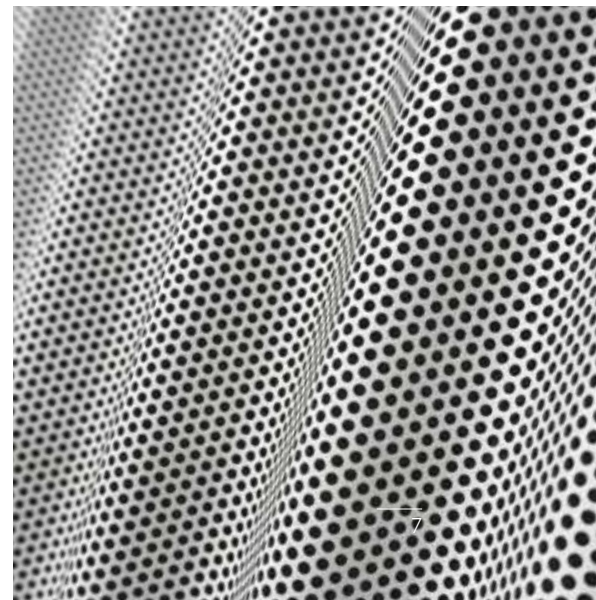
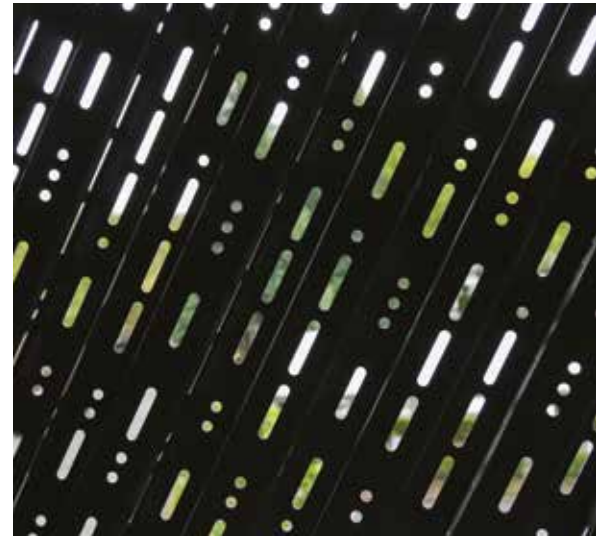
Location	Atlanta, GA
Architects	Cooper Carry
Profile	O-24, O-12 (custom profile)
Material	Zinc (Graphite Gray)
Perforation pattern	1/8" holes 3/16" spacing 40% open area





Interact with the Environment

Use Morin Perforated Panels to design with natural materials, light and shadows, shapes and patterns.



Contact Details

USA

HQ / East

685 Middle Street | Bristol
CT 06010

T: 1-800-640-9501

West

10707 Commerce Way | Fontana
CA 92337

T: 1-800-700-6140

South

1975 Eidson Drive | DeLand
FL 32724

T: 1-800-640-9501

Central

15000 Panatela Parkway | Little Rock
AR 72206

T: 1-800-640-9501

www.morincorp.com



For the most up-to-date version of this document please scan or click [here](#).



For the product offering in other markets please contact your local sales representative or visit www.morincorp.com

Care has been taken to ensure that the contents of this publication are accurate, but Morin Corporation does not accept responsibility for errors or for information that is found to be misleading. Suggestions for, or description of, the end use or application of products or methods of working are for information only and Morin Corporation accepts no liability in respect thereof.

Morin[®]
By Kingspan

May 6, 2026